



We live in an economy where we privatize gains, socialize losses and underprice risk.

— Thomas L Friedman

# THRIVE FRAMEWORK - THE HOLISTIC REGENERATIVE INNOVATIVE VALUE ENTITY

## WHY

Enterprises transitioning towards strong sustainability require ways to **assess their performance**, in context, relative to past performance, industry peers, within their community, and region. The service is **“the holy grail” of business strategy**, linking sustainable performance to organizational business model acting on a finite planet.

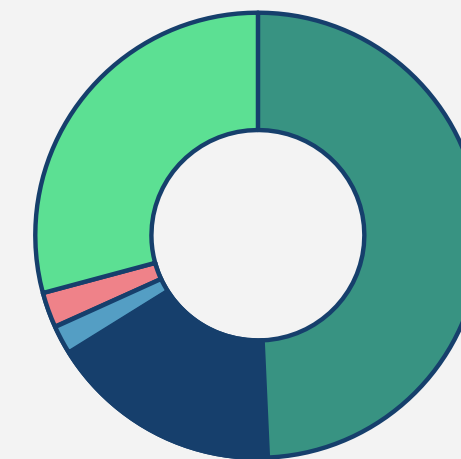
## HOW

The online web based, multi capital, values based, and science based tool, uses public integrated sustainability reporting data for material topic identification. A modular, user customizable, agnostic formula engine, **aggregates impact measures** based on global thresholds and allocations into **a composite sustainability performance score**.

## WHAT

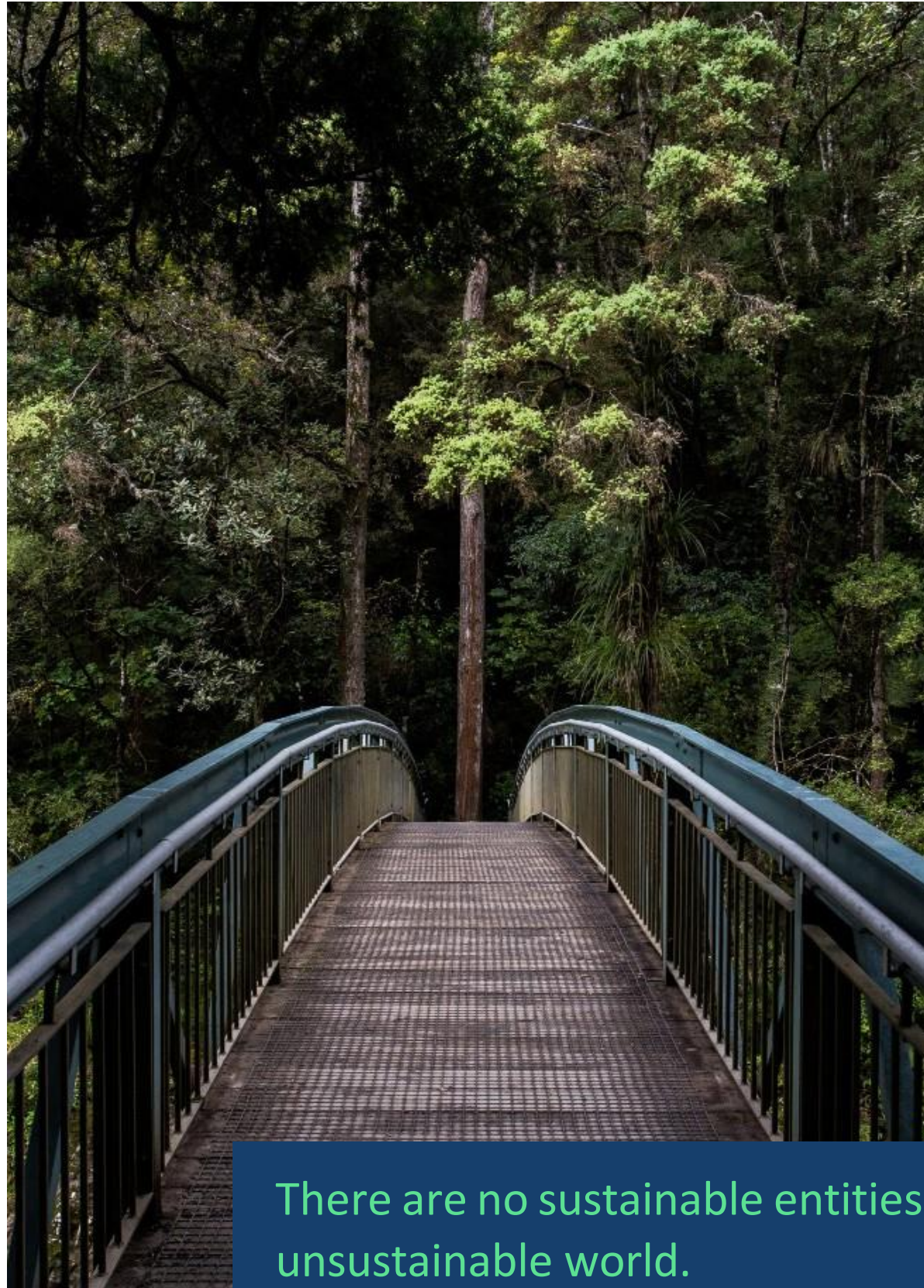
Based on seven years of trans-disciplinary research and design, the system gauges enterprise success through **scale-linking** at each level of impact. The system helps address wicked problems in transitioning to a regenerative economy by **implementing back-casting targets** whilst formulating their regenerative trajectory towards thrivable transformations.

## USE CASES



- 49% Consumers
- 29% Researchers
- 17% Consultants
- 3% Government
- 2% Corporate





There are no sustainable entities in an unsustainable world.

— Morris D Fedeli

# THRIVE PLATFORM

THRIVE Platform utilizes impact charts for instant visualization of performance, thresholds and allocations. Charts can showcase historical performance whilst providing guidance with backcast targets. These are informed by what the best available science demonstrates is necessary and sufficient to achieve long term prosperity.





# FOUNDATIONAL FOCUS FACTORS

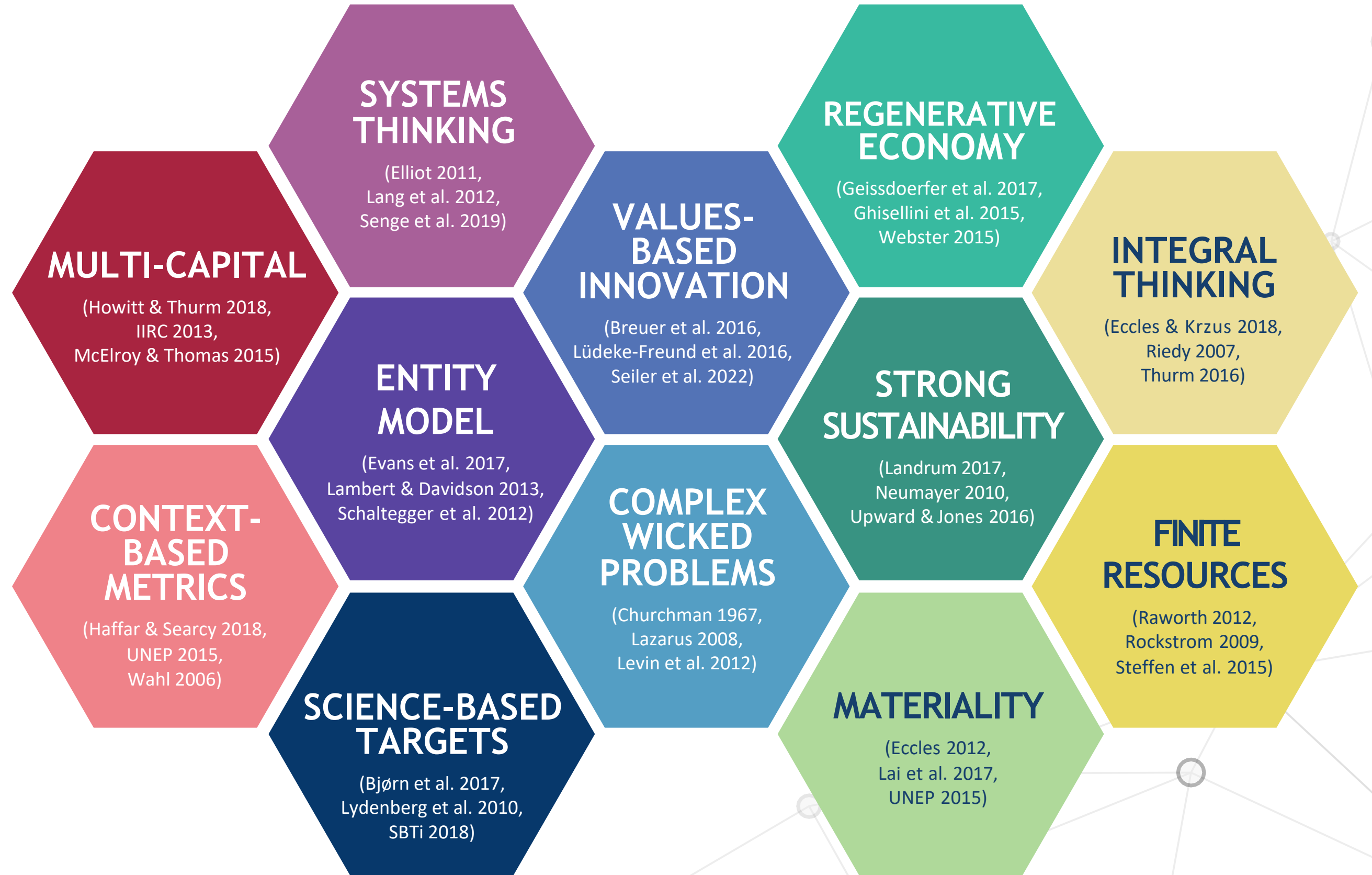
The 12 Foundational Focus Factors are the culmination of comprehensive research over a period of several years into the necessary and sufficient conditions required to transition humanity towards sustainability and indeed **Thrivability**.

Utilizing a **systems thinking** approach, THRIVE Platform through a process of **systemic orchestration** guides entities towards thrivability.

As a predictive tool it supports backcasting by taking a radical approach to **entity model innovation** across scale-linked levels.

*Source: Assessing Corporate Sustainability Performance of Business Models. How business model innovation drives a successful sustainable business strategy? Fedeli (2018).*

*Presented at the 3rd New Business Model Conference in Sofia, Bulgaria in (2018).*



# ASSAILING THE SEVEN C'S – CREATURE, COMPANY, COMMUNITY, CITY, COUNTRY, CONTINENT, AND COSMOS

THRIVE Framework is an open public platform providing instant top-level visual comparison between the sustainability performance of entities at stratified levels of granularity such as city, bio-regions or country-wide. Comparisons may be within a sector or community or longitudinally across years with each level **scale-linked** to the next.

Invoking the precautionary principle, taking a **strong sustainability** stance, and based on the framework for strategic sustainable development (FSSD), the platform invites non-substitution of natural capital resources with man-made ones.

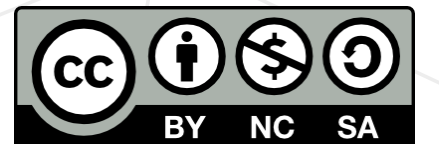
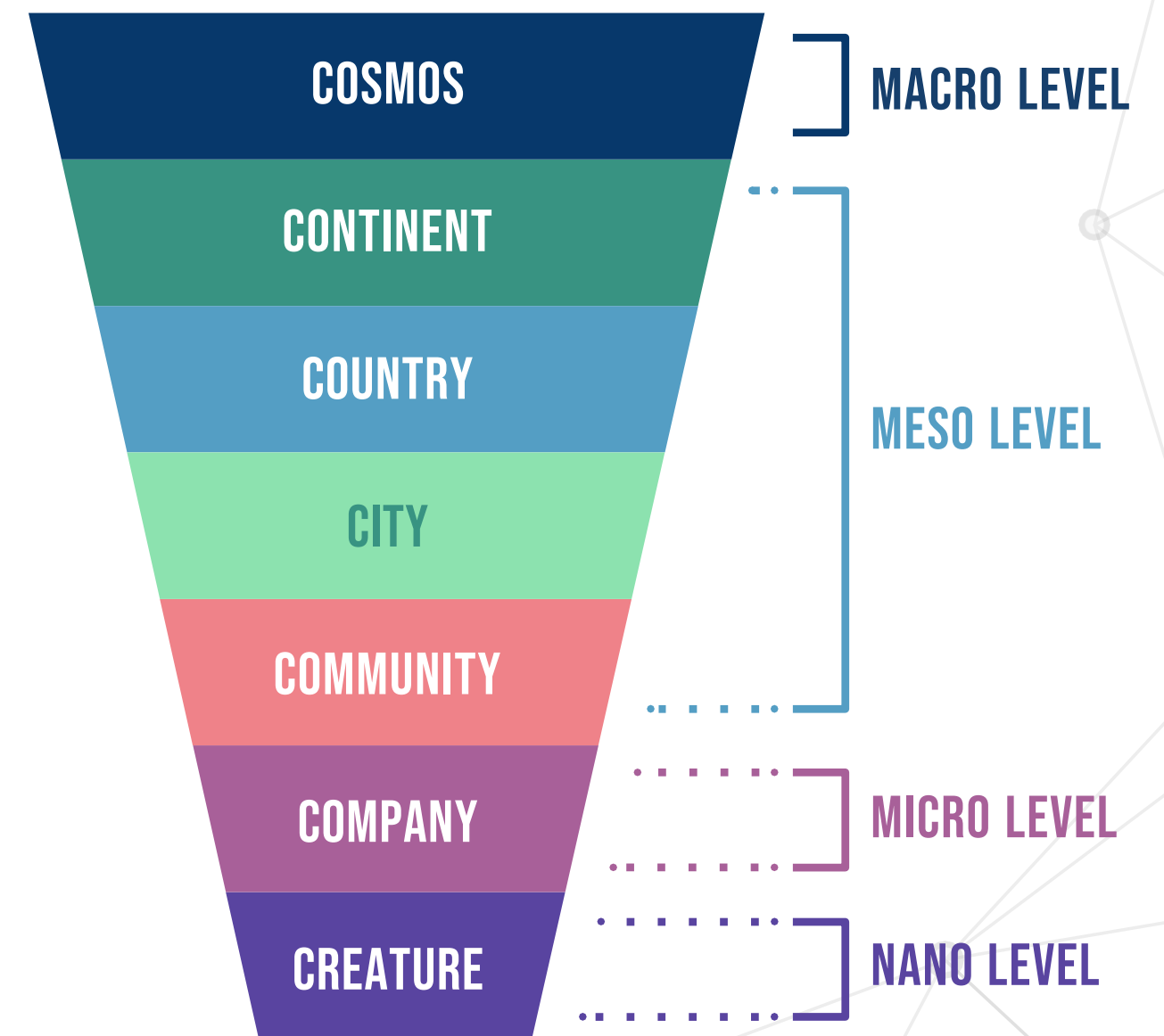
Whether discovering an entity's commitment to gender equality, renewable energy, becoming carbon neutral, or fighting the climate crisis, visualizations are unique as they provide instant comparison at a glance as to where an entity is succeeding or failing in its mission towards sustainability.

This first-principled approach, incorporates **backcasting targets**, placing entities on the trajectory towards thivability with the sustainability performance index providing a **context-based assessment** of its' impact. THRIVE Platform's intuitive visualizations represent the utility of resources together with **global thresholds and allocations** with entity impacts shown by material topic based on well-established metrics like the SDG indicators. By re-integrating rather than reinventing, the THRIVE Platform indicates resource allocation, inner and outer thresholds, impact and a sustainability performance indicator for each relevant material topic as well as an overall **sustainability performance score**.

THRIVE platform integrates the 7Cs, by measuring performance, adopting a scale-linked, values-based, context-based, and science-based approach informed by the natural sciences.

Furthermore, the dashboard incorporates dials and levers allowing one to manipulate weights and produce and capture customized charts to suit their needs for insertion in reports, presentations and other publications. A variety of charting and mapping options provide an easy to use, instant visual aid, displaying normalized sustainability performance measures in conjunction with selectable and scalable colour coded material topics and strategy.

THRIVE Platform **measures what matters most**, by empowering society and provoking entities to flourish by providing guidance towards thivability.



# THRIVE FRAMEWORK

Seven years in the making - and some 14,500+ hours of research and development – the THRIVE Framework is a **trans-disciplinary, holistic model** which aims to investigate the likely outcome of actions well before they occur.

The purpose of the **THRIVE Framework** is to help measure the potential of initiatives taken today to help transform society towards a better future: a place that is ‘Thrivable’, or beyond mere sustainability.

## TACKLING THE UNKNOWN

We live in a world that is defined by volatility, uncertainty, complexity and ambiguity (VUCA). Adopting a transdisciplinary approach allows us to create models that account for these **interdependencies**.

We can undertake experiments at a safe distance, we propose ‘what-if’ scenarios using advanced computer techniques, and we use the power of **big data** to make predictive analysis.

We aim to provide information systems that support sense-making in environmental and social sustainability transformations. Entities that seek access to decision support systems when designing principles for these transformations may benefit from our framework.

By leveraging machine learning and pattern analysis, the modelling of complex systems can be effected at **speed, scale and scope**. This provides an opportunity to develop technological rules to assist in combatting the many existential threats the world faces.

## PROVIDING POSITIVE GUIDANCE

Applying a **theory of change**, and implementing backcasting techniques, we can execute the trajectory towards ‘thrivable’ transformations - as illustrated below.

The THRIVE Framework uses data from scientific research (theoretical), as well as local, regional, and cultural environments (practical) to build scenarios based on four high-level perspectives as shown in each quadrant of the **systemic holistic model** chart.

By adopting the systemic holistic model and by implementing **systemic orchestration**, society can continuously **strive to thrive** and engineer the future it aspires to be.



# SYSTEMIC HOLISTIC MODEL

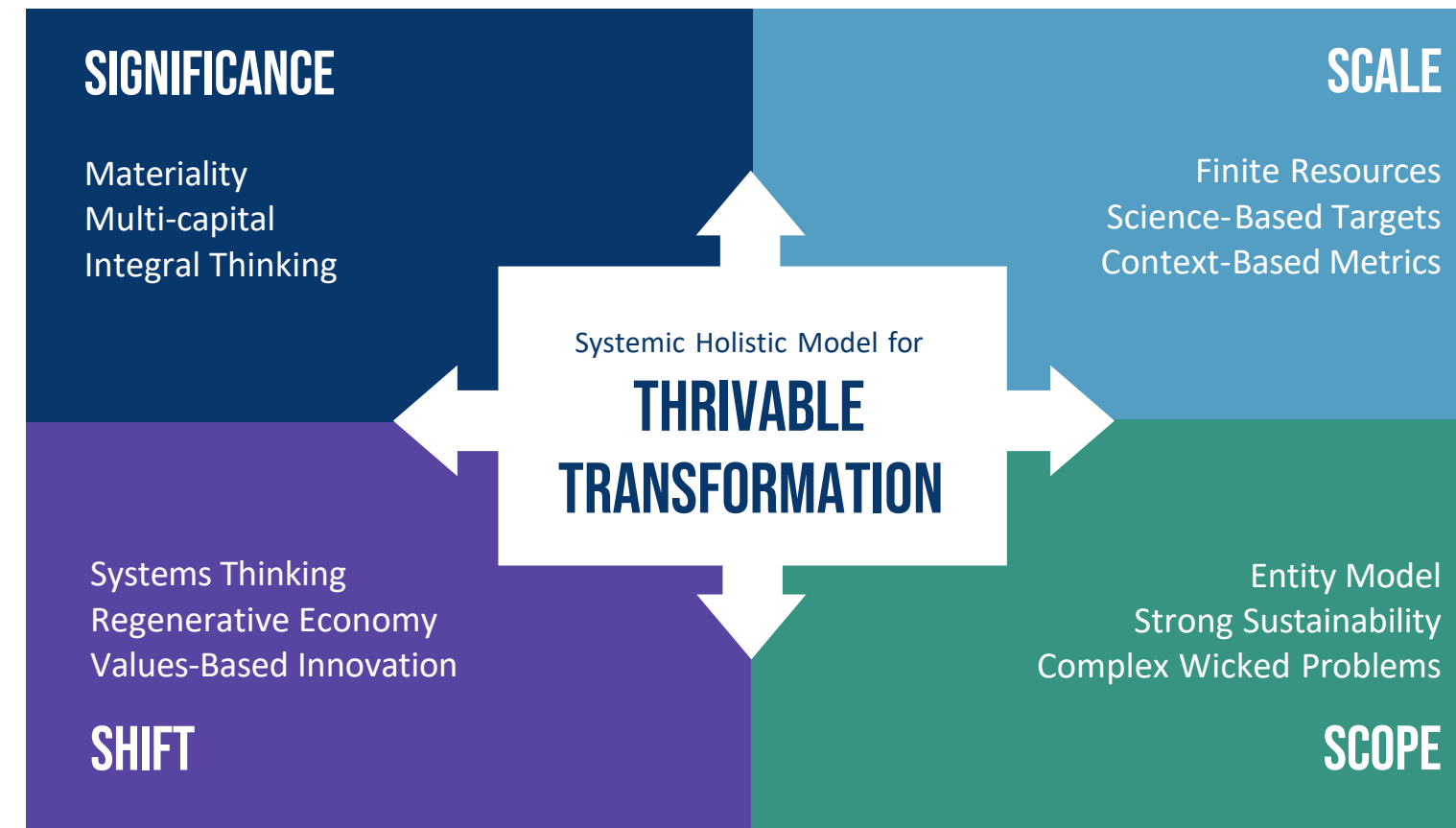
The systemic holistic model brings together the **12 foundational focus factors** operating across the four quadrants depicted below. Using leading backcasting techniques, it develops the trajectory and guidance towards a more prosperous future for the benefit of all of humanity.

## Significance:

Considers what is material, across all capitals, measured in an integrated way.

## Shift:

Considers a values-based, innovative approach, employing a trans-disciplinary approach, shifting from traditional linear to circular and regenerative economies.



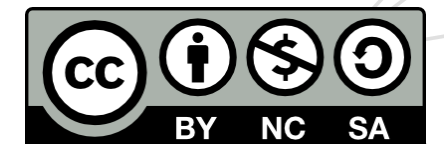
## Scale:

Considers the finite resources. impact from a science-based, and context-based basis.

## Scope:

Considers the complex wicked nature of the problem being examined from a strongly sustainable perspective and based on the entity being examined.

Source: *The Systemic Holistic Model (SHM) illustrates the four focus factor groupings of significance, scale, shift and scope. Foundational Focus Factors for Strong Sustainability Using Information Systems: The Trajectory Towards Thrivable Transformations, Fedeli & Shrestha (2020).*



The THRIVE Framework is a process which will enable you and your organisation's stakeholders or government policymakers to make co-operative, informed decisions on how to achieve common sustainability goals. It also enables consultants and analyst to advise on the same.